

Coming Full Circle

Call it persistency. Call it patience. Call it perseverance. However you want to categorize "it," the Pala family of Windy Knoll View has it.

After decades of great success on the female side of things, the males are finally getting their due credit and putting the defining exclamation point on one of America's most complete cow families.

All about the girls

The success of the Windy-Knoll-View Ultimate Pala (2E-94, DOM) family is not a new story by any means. She is the cow that put the Burdettes on the industry map of who's who. Owned and operated by Jim, Nina and their sons Kyle and Justin, and Justin's wife Claire, Windy Knoll View in Mercersburg, PA, is home to 106 milking cows. Pala's success story begins with a 76-point Heatherstone Lucky Typeblazer daughter, who was purchased by Jim and Nina as a milk cow. Jim bred this cow to Creek-Bluff Elevation Lester, which resulted in the VG-88 Windy-Knoll-View Creek Pauline. Pauline was then bred to Quality Ultimate, and on March 15, 1985, Pala was born. And since that day, things have never been the same!

Pala first calved in June of 1987, with a Valiant heifer, Paola. Paola was the first of, now 18, Excellent daughters that Pala would produce. Paola scored EX-92 in March of 1992. Pala's second daughter, Astro Jet Princess, was born in June of 1988 and classified VG-89 as a 2-year-old. Unfortunately, she was lost before she calved in again, but not before making a successful run in the All-American Contest. Paola, Princess and Pala were the Res. All-American Best Three Females in 1991.

Pala freshened for the third time in June of 1989 with twin Melvin heifer calves. One of the twins, Priss, went on to be the 1990 All-American Summer Yearling, and consequently scored EX-93

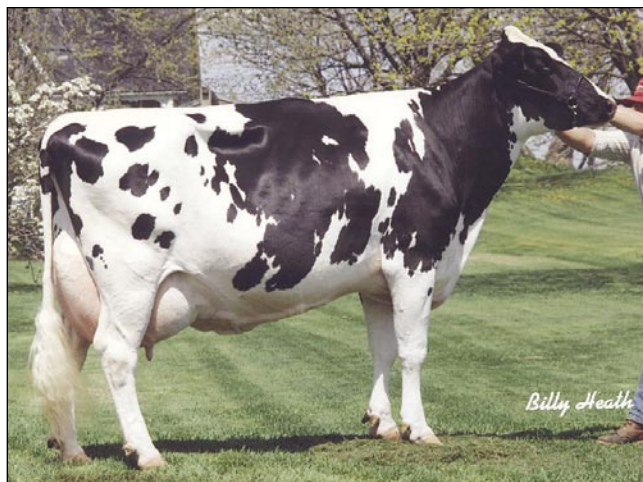
after freshening. "It was after these first three daughters calved in so well that we thought Pala might be a good brood cow," Jim explained. "We started to use her as a donor dam at that point." Pala's next breeding was to Counselor, which was a bull that worked very well, considering there are five Excellent Counselor daughters on the ground. The most recent is a daughter in England that scored Excellent in February 2007...15 years after Pala's first daughter scored Excellent. The Burdettes now know of 18 Excellent daughters from 11 sires - Valiant, Melvin, Deslacs Mid-

night, Counselor, Stardust, Blackstar, Leader, Astre, Storm, Integrity and Rudolph.

For those that breed cows, that story in itself is enough to be impressive. But the dynamics continue. Pala, herself, was indeed a brood cow extraordinaire... through her daughters like Windy-Knoll-View Peggy (3E-94) and Windy-Knoll-View Promis-ET (EX-95).

Daring to be different

But Pala did not have any sons in A.I. "The industry was on a total index binge, and Pala was way outside that box," Jim stated. "It was the local



WINDY-KNOLL-VIEW ULTIMATE PALA (3E-94, DOM)

Dam of 155 registered progeny
5-08 2x 365d 27,970 4.5% 1267 3.1% 879

Life: 123,650 4.7% 5777 3.3% 4077

Four highest classified daughters:

-Windy-Knoll-View Promis-ET

***TV*TL (2E-95)**

Sire: Rudolph

4-08 2x 365d 44,120 3.7% 1633 3.2% 1401

Life to date: 143,630 3.7% 5339 3.3% 4712

Offspring include daughters by Encore

(91 "Prom"); Outside (92 "Pledge," 90 "Policy," 88, 87, 86), Cousteau (87, 85) and Durham (87, 85) and sons by Outside (94, 92, 91) and Gibson (86). Was milking 142 lbs./day when she went to Madison as a 4-year-old. She went back the next year to show again, still milking 80 lbs. in her 17th month on that lactation.

-Windy-Knoll-View Peggy-ET (3E-94)

Sire: Stardust

4-05 2x 365d 35,290 3.9% 1383 3.2% 1127

Life to date: 189,250 4.2% 7954 3.2% 6109

Offspring include daughters by Durham (90, 87, 85) and Rubens (86) and sons by Outside (93) and Durham (95). Now 11 years old - still housed in the freestall barn. Has never had mastitis or been off feed in her life.

-Windy-Knoll-View CC Pear-ET (2E-94)

Sire: Counselor

5-00 2x 365d 34,660 3.4% 1187 3.0% 1029

Offspring include daughters by Astro Jet (92), Encore (92, 92) and Storm (91, 91).

-Windy-Knoll-View Pizza-ET (3E-93)

Sire: Astre

4-11 2x 305d 27,060 3.6% 972 2.9% 781

Life to date: 164,220 3.8% 6299 3.1% 5092

Offspring include daughters by Counselor (90), Storm (90), Outside (91, 87, 87) and Terrason (85).

farmers that told me all I needed to know. They used Pala sons and had tremendous results. That's all we really needed...to know the high satisfaction of local buyers who had used Pala sons." He continued, "One dairyman who had a group of Pala x Counselor-sired daughters just loved to look at those udders in the parlor - lactation after lactation. In fact, he purchased several more bulls from us after that bull. Another local dairyman bred his very first Excellent cow from a Pala x Starbuck son and asked, 'Why do these cattle score higher than the daughters of the hot bull semen that I purchase?'"

So the daughters were a proven success, and the sons, it seemed, were winning fans across the southcentral region of Pennsylvania. If Pala was still "out of the box," wouldn't it make sense to try and promote a different kind of bull in A.I.? Jim decided to contact Brian Coghlin from Foundation Sires in Listowel, ON, Canada, and was pleasantly surprised to hear that Brian wanted to come take a look at Pala's Durham grandson, Primetime (Durham x Peggy). "Brian looked at the family and then at the bull, and said he wanted him. He believed his group at Foundation would want him too, and that's how Primetime became the first bull from the family to enter A.I."

From there, momentum gathered and the Burdette's friend Jeff Reasner suggested a sales pitch for more grandsons to enter A.I. "Jeff was always at the farm and watched firsthand as the family developed," Nina explained. "He came up with an idea for 'My Three Grandsons' and sold the idea to Taurus Service in Mehoopany, PA. Consequently, Popular (Outside x VG-88 Juror Pompom); Promote (Outside x Promis); and Powerhouse (Outside x Peggy) ended up in the Taurus lineup. ABS Global also purchased an early son from the family, a Rubens son from Promis, Pro."

Coghlin and John Werry of Foundation Sires went back to the family again and picked up Power, a full brother to Promote at Taurus. The duo couldn't be happier with their Pala grandsons. "We're proud of being the first A.I. company to recognize the family and sample a bull from the lineage. We were amazed with the longevity and brood cow strength of the Palas, especially how well they thrived and competed in a loose housing setting," Brian explained.

John agreed. "These bulls, and this family, conform almost exactly to the ideals with which Foundation Sires began in the first place...to get back to a grass-roots approach to bull buying. We select bulls with a logical, common-sense mating, from cow families that are

Sires at a glance

PRIMETIME (EX-95, ST'05) Durham x Stardust Peggy – typifies the longevity of the family as the #1 Herd Life bull in Canada. Debuted with a proof in 2/05 and now has 694 daughters classified 76%GP or better and is a +14 Type Rating. He is one of the best Feet & Leg bulls in the breed at +13 in Canada. U.S. numbers for 2/07 +2.05T +1.71UDC +1.95FLC. Sire of 2006 Holstein World's People Choice Heifer.

(Foundation Sires)

POWERHOUSE (Outside x Peggy) – Appropriately named because he sires real strength and depth of rib and body. Daughters have enough bone but are clean in the hock and he sires open (3 aAa). 2/07 numbers +2.32T +1.45UDC +2.06FLC.

(Taurus Service)

POWER – Debuted 2/07 and is breeding true to the family. Breed leading type at +14, high Herd Life and a strong will to milk. Breeds very similar to Outside, with lots of stature and length, snug and youthful udders and a functional rump. 2/07 numbers +2.15T +1.69UDC +1.58FLC.

(Foundation Sires)

PROMOTE (Outside x Promis) – Debuted 2/07 with 29 classified daughters in his first type summary that average actual 78.9. Production appears to be very good. Daughters are tall, with good strength, exceptional bone quality, udders and feet & legs. 2/07 numbers +2.35T +2.36UDC +1.38FLC.

(Taurus Service)

POPULAR (Outside x Juror Pompom) - Has sired several major show winning heifers and calves. This bull sires some style and very upstanding heifers. Note his aAa code (216435) and DMS 126. There are a few early daughters milking now from Popular.

(Taurus Service)

**In a beneficial marketing agreement, all Taurus sires are available in Canada through Foundation Sires, and all Foundation Sires bulls are available in the U.S. through Taurus.*

PROOF (Dundee x Promis) – One of the oldest sons from the family at Select Sires (five in all) - has been very popular in their Showcase Selections TM program for breeders looking to capture the type of Dundee and the Pala family. A fancy bull with a great front-end, hard topline and plenty of rib. His first calves will be born in May 2007.

(Select Sires)

“We hate to think about where we would be if we hadn't had Pala.”

Jim Burdette

deep with pedigree, with proven longevity and established components. To us, that sure sounds like the Palas!"

Dick Witter of Taurus Service shares similar convictions. "The AI industry has always put too much emphasis on production indexes, in my opinion, which has resulted in the 'bypass' of some great families like the Palas. Some sire analysts look at sire stack, which

probably resulted in the overlooking of the Palas because of Ultimate. At Taurus Service we have always selected from a complementary mating sire standpoint and put extra weight on the maternal side of the pedigree. I was convinced early that Outside was the kind of bull that would make 'old cows,' which entered into us taking the three Outside grandsons." This first batch of Pala grandsons at Taurus are all Excellent.

It wasn't long before others were making purchases in Mercersburg. Select Sires added some Pala bloodlines to their lineup, and Rick VerBeek explained why. "We have been aware of the Pala family and its ability to transmit type for quite some time. Windy-Knoll-View Promis was the cow that really got us watching the family closely. Obviously she has done extremely well in the showing, but I have always felt that in addition to being a show cow,

*Please turn to page 52
Click Here*